

George Woods Novice Rally

incorporating the **Rookies Ramble**
and Round 1 of the **2017 HRA Resto Country
Spares Standard Car Challenge**

Also: Round 1 of the 2017 HRA Rally Championship
Saturday, 1 April 2017



Supplementary Regulations

Promoted by

Historic Rally Association, Inc

George Woods Novice Rally

66 Blue Ridge Road, DEWHURST, Vic, 3808
0427443821 (Nick)—0410148058 (Glad)

gwnrally@gmail.com

www.georgewoodsnovicerally.wordpress.com

Access for all to the sport of rallying—in the spirit that George epitomised

About the event...

The **George Woods Novice Rally**
incorporating the **Rookies Ramble**:

- is designed as an introduction to rally/trialling for competitors with little or no experience
- uses the best roads in the Yarra State forest area, suitable for a sensibly driven road car
- costs only \$140 to enter, good value for around 100 Km of competitive sections
- has navigation by route charts and simple map reading with many, many “Wrong Way Go Back” boards
- has times set to be achievable – provided no navigation errors are made
- is aimed at new competitors; only Grade F (Rookie) and Grade E (Novice) crews are eligible for Rookies Ramble awards; Other crews may compete and are eligible for George Woods awards, so long as either:
 - » at least one crew member is Grade E or Grade F, or
 - » the vehicle is a Standard Car as defined by the HRA SCS Series Rules
- encourages family crews, lady crews and young competitors to participate.

This year’s event also includes the **George Woods Historic Rally**, a round of the 2017 HRA Rally Championship.

So read the supplementary regulations, complete and post the entry form straight away.

See you in the forest.

Glad, Ray, Nick, and other members of the directing team.

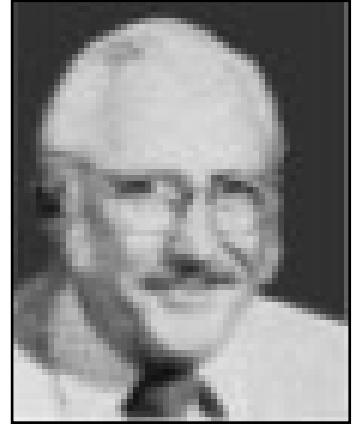
Enquiries to Glad Fish:

04-1014-8058, 03-5944-3821

email: gwnrally@gmail.com

About George Woods...

George Woods competed for many years in all facets of motor sport. At the same time he encouraged others, especially novices, ladies, youngsters and the like to have a go, too. George always used a very standard Peugeot for his motor sport.



George's Peugeot 403 (and later his 404) went in everything, whether it was a motorkhana, a trial (anything from club event to national championship), an open race meeting (in the early '70s, you could see George's 403 fighting Peter Brock for a corner—George proudly wore a tee-shirt emblazoned with the words 'Ecurie Mobile Chicane' accompanied by a picture of him and Brockie disputing the same bit of bitumen), a circuit sprint, a hillclimb or an observed section trial. He was an important part of CAMS, being Chairman of the Victorian State Council for several years in the late '70s; he was awarded CAMS' Service Award in 1979.



George lived life to the full.

As well as motor sport he was passionate about music, particularly jazz. An accomplished musician, he played his guitar at many a function, motor sport or otherwise, either solo or with his group.

George succumbed to a heart attack in 1979. In honour of the man and his enthusiasm for motor sport our event is called the **GEORGE WOODS NOVICE RALLY**.

George Woods Novice Rally—1 April 2017

Notes

Mainly for newer competitors in the George Woods Novice Rally

Supplementary Regulations

4

A novice rally requires the crew to navigate its way along a route specified on a map using public roads; it is NOT a race against the clock. Access to the route is controlled by officials stationed to warn members of the public that a competitive event is taking place on the roads ahead and to exclude them from the competition area.

In rally trialling, we use the 24 hour clock, so 19:30 is 7:30 pm, 20:00 is 8:00 pm and so on.

The rules that cover the sport of rally trialling are given in these documents. Although we try to tell you the most important rules, you should get a copy of the CAMS Manual of Motor Sport (borrow one from a fellow club member or download it from CAMS website—www.camsmanual.com.au); the Manual contains the NCR and the NRC. You can download the VRB from www.vicrally.com.au or obtain a copy from the CAMS Office.

1 THE EVENT

The event will have two components conducted on public and/or private roads in the State of Victoria on 1-2 April 2017 and hereinafter referred to as “the event”.

- a) The **George Woods Novice Rally**—
 - a Multi-Club Non-Special Stage Novice Rally; This component will incorporate the Rookies Ramble, a shorter event for Novice and Rookie competitors only. As well as its primary role in introducing new competitors to the sport of rallying, this component will also form Round 1 of the Historic Rally Association (HRA) 2017 Resto Country Spares Standard Car Challenge and insofar as this is concerned, NRC 1.34 (iv) shall not apply.
- b) The **George Woods Historic Rally**—
 - a Multi-Club Non-Special Stage Rally; this component will form Round 1 of the HRA 2017 Rally Championship.

The HRA Scorer will be required to extract all necessary information from the published results to allot HRA series and championship points to eligible crews.

2 SCHEDULE OF DATES

Entries open	Upon publication of these Supplementary Regulations	
Training Session	Thursday	16 March 2017 at 19:30 to 22:00
Entries for Ballot close	Friday	24 March 2017 at 19:30
Ballot	Friday	24 March 2017 at 20:00
Further Regulations emailed	Monday	27 March 2017
Scrutiny and Initial Documentation	Wednesday	29 March 2017—18:00 to 20:30
Entries Close	Wednesday	29 March 2017 at 20:00
Final Documentation	Saturday	1 April 2017 at 17:15
Event Start	Saturday	1 April 2017 at 19:15

3 SCHEDULE OF FEES

	George Woods Novice Rally	George Woods Historic Rally
Entry Fee with early Bird Discount	\$140	\$200
Entry Fee (after Ballot)	\$190	\$250
Training Session	\$5 per person	

4 AUTHORITY

The event will be conducted under the International Sporting Code of the FIA (ISC), the National Competition Rules (NCR) of the Confederation of Australian Motor Sport Ltd. (CAMS), the National Rally Code (NRC), the current Victorian Rally Bulletin (VRB) and these Supplementary Regulations and any further instructions that may be issued. The CAMS Permit Number is 317/0204/01. This Event will be conducted under and in accordance with CAMS OH&S and Risk Management Policies, which can be found on the CAMS website at www.cams.com.au.

5 PROMOTER AND ORGANISERS

The event will be promoted by the Historic Rally Association, Inc. The organising committee comprises the Clerk of Course and the Assistant Clerks of Course.

Clerk of Course (Director):	Glad Fish (CAMS Licence 1031757) 03 5944 3821, 04 1014 8058 mob.
Event Secretary:	Glad Fish, 66 Blue Ridge Rd, Dewhurst, Vic 3808 gwnrally@gmail.com , gladfish@netspace.net.au
Assistant Clerks of Course, road:	Ray Garrad (9883422), Nick Wright (889842)
Chief Scrutineer:	David Isherwood (9026563). 03 9873 3342 AH
Checker:	John Roberts (9898788)
Safety Officer:	Neil Beddoe (TBN)
Area Coordinator:	Keith Cuttle (9025548)
Stewards:	Club: Glenda Garrad (9883423) CAMS: TBN
HRA Resto Country Spares Standard Car Challenge Contact	Rob Cranston 03 95630977 / 0414560688
Scorer	Gary Hodgskiss (881485)

CAMS Crew grades are based on experience and results. Full criteria are given in the VRB. Basically, a new competitor is Grade F (Rookie) until he or she has finished five rallies, when they become Grade E (Novice). To become Grade D (Clubman) you must have finished in the first six outright in an event of higher status than an Introductory/Novice event during the last three years; Grade C (Recognised Clubman) requires a finish in the top three outright in a major club series (VCRS) or higher event in the last three years. In Grades D and C drivers and navigators are graded separately. Grade D or C competitors in the 'other' seat are graded as Grade E unless qualified higher.

Level 2NS is the basic CAMS club competition licence. Your club secretary can give you an application form—don't leave it till the last minute! The 2NS licence can be used for Non-Speed events such as Introductory Rallies, Touring Road Events and Motorkhanas, higher level licences include 2S for Speed events such as Autocross and Lap Dashes. To run in rallies other than introductory events, you need a Clubman or National Rally Licence which require an Observed Licence Test as well as completing a form. Licence costs are: L2NS \$65, L2S \$105, CR \$160 and NR \$220.

If you need to join a club, contact one of the following:

- ◇ Historic Rally Association (Kate Officer—membership@hra.org.au)
- ◇ Pakenham Auto Club (Mick Kelly—membership@pakenhamautoclub.org.au)
- ◇ other club (check out the links on www.vicrally.com.au or www.cams.com.au).

Any registered, roadworthy, reliable vehicle with reasonable ground clearance can be used in this event. See regulation 11 below for additional requirements.

GET ORGANISED EARLY! You need to do a lot to prepare for a trial; start by getting your team sorted out and your paperwork filled in as soon as possible—usually the navigator takes responsibility for paperwork.

6 CREW ELIGIBILITY

George Woods Novice Rally

Entries are open to all CAMS Grade F, E, D and C crews; in keeping with the event philosophy of encouraging new competitors, crews consisting of an F grade driver with an A or B navigator and a B driver with an F navigator may be accepted by the organisers.

Only Grade F (Rookie) & E (Novice) crews are eligible for the Rookies Ramble awards.

In addition to Grade F & E crews, higher graded crews with ONLY ONE Grade D or C or B or A crew member are eligible for the George Woods Novice Rally outright awards.

Crews with two members graded higher than E/E may enter, providing they are driving a Standard Car as defined by the HRA, but are not eligible for any awards other than points in the SCS.

Each crew member and the competitor must hold a CAMS Level 2NS/2NSJ (or higher) or relevant Competitor Licence.

George Woods Historic Rally

Entries are open to all HRA Grade A, B and C crews.

Each crew member and the competitor must hold a CAMS Clubman Rally (or higher) or relevant Competitor Licence.

Both Components

Each crew member must be a financial member of a club affiliated with CAMS in Victoria.

The driver must hold a valid Driver's Licence allowing him/her to drive on Victorian roads.

All crew members must meet officiating requirements listed in the VRB; that is either be a new competitor or have acted as an official on a rally or trial in the previous twelve months. Crew members under the age of 18 years are exempted from this requirement.

Certain public, property, professional indemnity and personal accident insurance is provided by CAMS in relation to the event. Further details can be found in the CAMS Insurance Handbook, available at www.cams.com.au.

All crew members are encouraged to have their own personal health insurance and ambulance cover.

7 VEHICLE ELIGIBILITY

All vehicles must comply with the requirements of Schedule R of the current CAMS Manual and the VRB.

8 ENTRIES

Entries open and close on the dates and times set out in the Schedule of Dates. Entries must be on the official entry form and should be sent to the Event Secretary's address. The entry fee is set out in the Schedule of Fees. The Early Bird Discount applies for complete entries (i.e., all shaded sections of the entry form filled in and full payment) received before the ballot; entries received, completed or changed later will require the full Entry Fee.

Payment by EFT to bank account: Account Name HISTORIC RALLY ASSOCIATION (INC), BSB 033 050, Account No. 143 422, including the reference – GWR & your NAME (copy of the EFT Payment Receipt to accompany entry form). Cheques, money orders etc. are to be made payable to "HISTORIC RALLY ASSOCIATION (INC)." An entry without (proof of) payment will not be accepted (same applies to Early Bird Discount).

The field will be limited to 60 vehicles; with no more than 40 in the George Woods Novice Rally. If an excess of entries is received before the ballot for starting order, they will be selected according to supplementary regulations 6 and 10. Entries received after the ballot will be accepted in order of receipt until the close of entries or the field limit is reached. The organisers reserve the right to refuse any entry in accordance with NCR 83.

9 OFFICIAL CORRESPONDENCE

Further Regulations, Results and other official correspondence will be emailed to the address supplied on the entry form and also posted on georgewoodsnovicerally.wordpress.com and/or on the official notice board at Rally HQ.

10 BALLOTS: ACCEPTANCE & STARTING ORDER

George Woods Novice Rally

If more entries than the field limit are received before the time Entries for Ballot Close, entries will be accepted in order of crew grades with the lowest grades taking preference: F/F, F/E, E/E, F/D, E/D, F/C, etc. If necessary, a ballot will select which of the final group will be accepted. An additional five entries may be accepted conditionally on withdrawals.

On a rally or trial, cars start at intervals—usually two minutes—the more experienced and generally faster crews start first to lower the chance of catching and passing other cars.

Crews will start in driver grade order with C grade first, followed by D, then E then F. Ballots held at the time set out in the Schedule of Dates will determine starting order within driver grades.

Entries received after the ballot will be started in order of receipt at the end of their grade.

George Woods Historic Rally

If more entries than the field limit are received before the time Entries for Ballot Close, entries will be accepted in order of crew HRA grades with the highest grades taking preference: A/A, A/B, B/B, B/C, C/C. If necessary, a ballot will select which of the final group will be accepted. An additional five entries may be accepted conditionally on withdrawals.

Crews will start in driver HRA grade order with A grade first, followed by B, then C. Ballots held at the time set out in the Schedule of Dates will determine starting order within driver grades.

Entries received after the ballot will be started in order of receipt at the end of their grade.

Both Components

The event is structured so that all competitors in the **George Woods Novice Rally** should start sections common to both components before the first **George Woods Historic Rally** competitor. However, **George Woods Novice Rally** competitors running late may find themselves starting after some **George Woods Historic Rally** competitors.

Scrutiny is a good opportunity for a final check on your car's mechanical soundness. Scrutineers have an important rôle in checking cars for safety; scrutiny night is a big one for them. So, try to make their job easier by preparing the car well and presenting it clean. Feel free to ask the scrutineers' advice on aspects of car preparation.

11 SCRUTINY

All vehicles must be presented for scrutiny before starting the event. Helmets for each crew member (refer regulation 22.2 below) and the vehicle's CAMS Log Book and/or HRA Log Card (if either or both has been issued) MUST be produced at scrutiny. Scrutiny will be held on the date and time set out in the Schedule of Dates; at JC Auto, 578 Canterbury Road, Vermont; phone (03) 9873 3022. Competitors living more than 50Km from this venue may request permission to be scrutinised by a CAMS Regional Scrutineer; full details must be included on the entry form before permission will be granted. All vehicles must be roadworthy and comply with the General Requirements for Rally cars, per the CAMS Manual of Motor Sport, when presented for scrutiny (i.e., ALL lights working, effective mufflers and exhaust systems, current registration/permit label affixed to the vehicle). All vehicles should be presented clean (particularly underneath) or scrutiny maybe refused. All vehicles must, in addition, carry the following securely mounted inside the car:

Minimum requirement is one or two dry powder extinguishers (total capacity 2 kg), content and service due date identifiable and current (<3 years from last service).

- Fire extinguisher(s) in accordance with Schedule H of the current CAMS Manual of Motor Sport.
- First Aid Kit
- OK/SOS board
- Two reflective triangles.

We also advise you carry—tow rope, spare oil, spare water and a tool kit.

By complying with the regulations under which the event is run, we are all protected by CAMS insurance. One very important aspect of this is ensuring that all the paperwork is correct. If your club membership or CAMS licence has expired (or if you haven't got one yet), get onto your club secretary and make sure you have them in time. Save yourself hassle at the start by getting all the documentation checked at Official Scrutiny.

Each competitive section has a time allowed to drive it without penalty. The number of minutes that each competitor takes in excess of the allowed time is recorded as a penalty for that section. Additional penalties are added for failing to follow the correct route (by missing Passage Controls or wrong direction of entry to Controls or incorrectly recorded observations—Information Boards)

This gives you some idea of the length of the event, in both distance and time. If you have a service crew, they will be able to meet you at service; if not, you will need to look after yourself; either carry enough fuel to complete the whole event or leave your spare fuel at the start/finish/service area. Don't forget to carry some tools, just in case.

You will need to buy these maps if you don't already have a copy. Another thing to do sooner rather than later. Remember that the shop could sell out!

Hopefully you won't need to protest, but if you do, the CAMS Manual tells you how to go about it.

Further Regulations have a lot of important information—particularly for the navigator, who usually looks after matters of planning and scheduling. It is usually a good idea to ensure the navigator gets a copy.

12 --> DOCUMENTATION

Documentation will be checked before a car is allowed to start. Initial Documentation will be at Official Scrutiny; only outstanding items (including all items in the case of a vehicle scrutinised regionally) will be checked at Final Documentation—just before the Start of the event. The following items MUST be produced at Documentation:

- The competitor and both crew members' current CAMS Licences
- The driver's current civil licence
- Current Club Membership cards for competitor and both crew members and
- The vehicle's current Certificate of Registration or Permit showing the competitor as the owner. If the competitor is not the vehicle owner, a letter from the owner giving permission to the competitor to use the vehicle in the event must be provided.

13 --> TIMING & SCORING

Times of arrival and departure from controls will be recorded to the second.

George Woods Novice Rally

This component will be scored according to the number of whole minutes taken in excess of the stage target time with any part of a minute rounded up.

George Woods Historic Rally

This component will be scored according to the number of seconds taken in excess of the stage target time.

14 --> RUNNING DETAILS

George Woods Novice Rally

The event will be run in one division of approximately 100 kilometres competitive and 90 kilometres transport (for the Rookies Ramble the distances are approximately 40Km and 40Km).

George Woods Historic Rally

The event will be run in one division of approximately 160 kilometres competitive and 120 kilometres transport.

Both Components

Start, Service and Finish will be at Powelltown Recreation Reserve. No fuel will be available during the event. Food and drinks will be on sale at the start/finish area during the event.

15 --> OFFICIAL MAPS

The official maps for the event are Beenak RS 1: 50,000 and Toorongo RS 1: 50,000. These maps are available from Melbourne Map Centre, Waverley Road, Chadstone and other map shops. Other maps may be supplied by the organisers.

16 --> PROTESTS

Any protest must be lodged in accordance with Part XII of the NCR.

17 --> FURTHER REGULATIONS

These will be emailed in accordance with Supplementary Regulation 2 (Schedule of Dates) and 9 (Official Correspondence). They will include the following details: Car Number, Start Location, Report and Start Times, Odometer Check, Navigational Hints and Control Procedure, Any other relevant information.

18 AWARDS

Awards will be a minimum of trophies awarded to—

George Woods Novice Rally

First, Second and Third Outright and First Grade F (Rookie).

First placed Standard Car—Standard Car is defined as a vehicle meeting the HRA's Standard Car definition (see www.hra.org.au).

Also First, Second and Third in the Rookies Ramble depending on number of crews eligible.

George Woods Historic Rally

First, Second and Third Outright.

19 → PENALTIES

Penalties will be as per the NRC.

20 SERVICE CREWS

Service crews must be registered on the entry form and competitors are reminded that service crews are considered a part of the “crew” and penalties may be applied to competitors for actions of their service crew.

21 → CAR NUMBERS

Competitors may provide their own competition numbers; alternatively ‘liquid’ numbers will be available at the start.

22 NRC VARIATIONS, ADDITIONS, AND CLARIFICATIONS

These are as per the current Victorian Rally Bulletin plus the following:

22.1 Passage control procedure—at all passage controls, crews must stop and present their road card for endorsement by the official.

22.2 → Schedule D of the CAMS Manual of Motorsport lists the requirements for safety helmets and clothing to be worn by crew members. Clothing should be non-flammable and a helmet meeting AS1698 or equivalent is required for each crew member.

22.3 All event officials are Judges of Fact.

23 → POSTPONEMENT, ABANDONMENT OR CANCELLATION

If necessary, this will be carried out in accordance with NCR 59.

24 → CREW BRIEFING

A briefing for all crew members will be held before the start to explain procedures, signs and driving standards. Attendance is compulsory and crews will not be allowed to start the event unless both crew members and (if a service crew is nominated) a service crew member have signed on at the briefing.

The NRC lists many penalties. Behave yourself and you won't experience the more severe penalties listed. However, it is useful to know that each missed observation or passage control and each wrong direction of entry to any control cost you a 30 minute penalty—so it is vital to follow the prescribed route and record observations correctly and clearly in the right place. Sample observation boards will be displayed at the start; check them out.

You can buy competition numbers to stick on the front doors at shops and online stores like Autosport; alternatively, we will use white shoe cleaner or chalk pen to write on your rear side windows.

Crash helmets are now compulsory in Novice Rallies. Good quality helmets at reasonable prices are available from motorsport shops and online stores such as Autosport; helmets will be checked at scrutiny for compliance and damage.

NCR 59 requires us to include this statement in case there is a need to postpone, abandon or cancel the event. In the unlikely event of this happening, all entries received will be notified. Please ensure at least one mobile phone number is included on your entry form, just in case.

The briefing is your last chance to ask questions before you start the event. Remember that there is no such thing as a dumb question—if you don't ask, you may never know.

The entry form has a spot to advise how many are coming. Feel free to ring us and change the details at any time. The training session is aimed at the first time competitor—both driver and navigator—but more experienced competitors are encouraged as we always have more to learn.

25 TRAINING SESSION

A training session for new competitors (and other interested parties) will be held, on the date and time set out in the Schedule of Dates, in CAMS State Meeting Room, 851 Dandenong Rd, Malvern East (enter from the rear carpark in Clarence Rd).

Attendance is not compulsory, but may be of benefit to both navigators and drivers—particularly new competitors. A charge per person, to cover the cost of materials, will be made for this session. It would also be helpful for planning the session to advise the numbers of intending participants.

26 USE OF PROHIBITED SUBSTANCES

Any holder of a CAMS 'Competition' or 'Officials' licence (or equivalent licence issued by another ASN) may be tested for the presence of drugs (or other banned substances) and subject to a penalty(ies) for a breach in accordance with the CAMS Anti-Doping Policy and/or the CAMS Illicit Drugs in Sport (Safety Testing) Policy as published on the CAMS website. Consumption of alcohol in the paddock, pits or any section of the competition venue/course under the control of the Officials is forbidden until all competition is concluded each day. Accordingly, any holder of a CAMS 'Competition' or 'Officials' licence (or equivalent licence issued by another ASN) may also be tested for the presence of alcohol by a CAMS Accredited Testing Official (CATO) in accordance with the CAMS Standard Operating Procedure for Breath Alcohol Testing.